

Geologic Hazard Analysis



Field Reconnaissance

Company Background

Earth Consultants International Inc. (ECI) is a southern California based earth science firm serving clients worldwide since 1997. We offer service to a broad variety of markets and provide strong background and expertise in multiple earth science disciplines. Extensive experience in theoretical and applied geology contributed to our high quality technical problem-solving abilities based on our clients' needs.

Professional Staff

- Certified Professional Geologists
- Certified Engineering Geologists
- Certified Hydrogeologists
- Certified Geophysicists
- Certified Exploration Geologists
- Certified UAV Pilots
- GIS Experts and Technicians
- Field Technicians

Location

1642 East Fourth Street
Santa Ana, CA
92701-5148

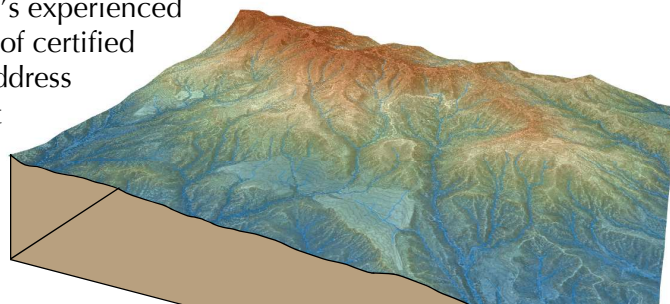
Contact Us

714.544.5321 or
info@earthconsultants.com

Earth Consultants International's experienced and licensed professional staff of certified geologists, can evaluate and address potential geologic hazards that affect your projects.

Our evaluations include:

- Landslide Susceptibility
- Liquefaction Susceptibility
- Flood Modeling
- Earthquake Scenarios
- Scenario Modeling
- Vulnerability Assessments
- DEM Terrain Analysis
- Loss Estimations using HazUS



DEM Terrain Analysis (modern and historic)



Landslide Evaluation

Our work performances include:

- reviewing and compiling background information relevant geotechnical reports, project plans, relevant publications, and other pertinent data;
- conducting field studies and assessing the on-site geological conditions
- performing geological analyses to address hazard potential remediation
- preparing reports

Field and Remote Sensing Methods:

- Using modern field methods: remote sensing, geologic trenching, geologic drilling, cone penetrometer testing (CPT),



Fault/Landslide Trenching and 3D Processing



Geologic Drilling and Core Description